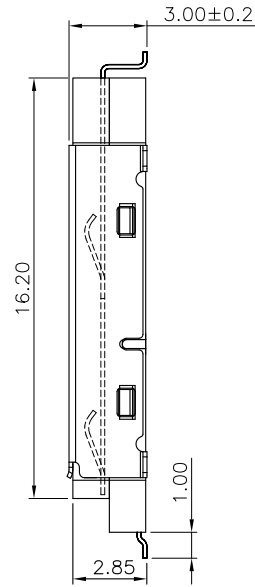
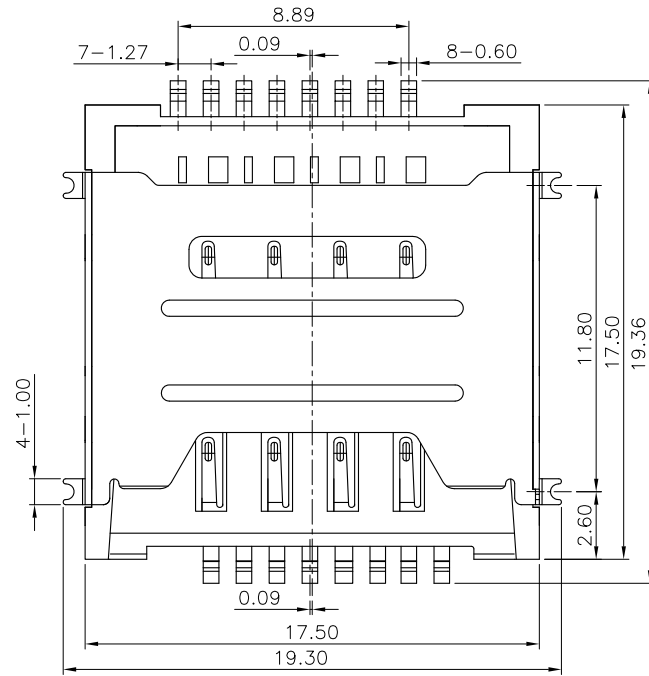
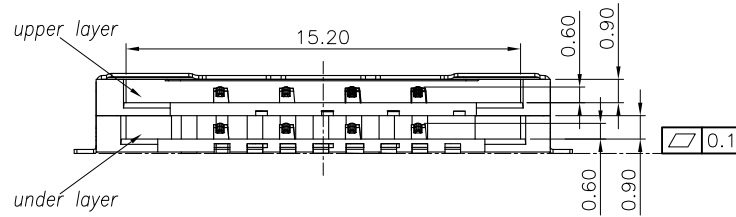
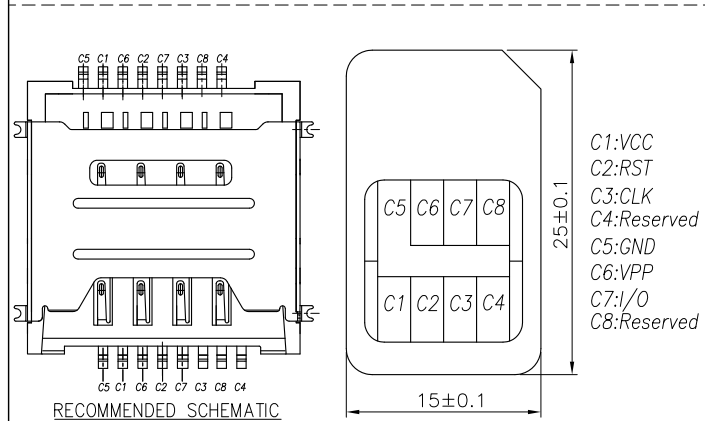


THIS INFORMATION IS CONFIDENTIAL AND IS DISCLOSED TO YOU ON CONDITION THAT NO FURTHER DISCLOSURE IS MADE BY YOU TO OTHER THAN TETULL PERSONNEL WITHOUT WRITTEN AUTHORIZATION FROM TETULL LTD.

ROHS Compliant



#### SPECIFICATIONS:

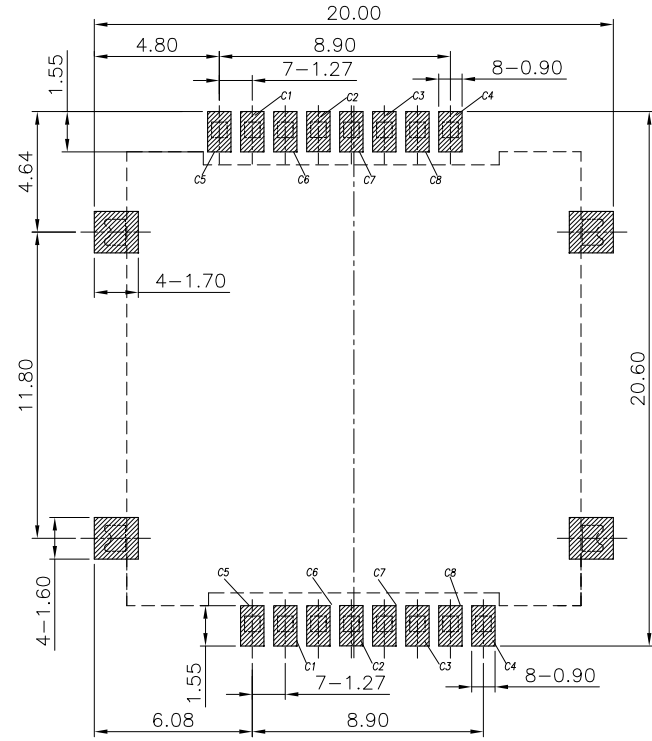
##### 1. ELECTRICAL CHARACTERISTICS

- 1-1. CONTACT RESISTANCE: 80 milliohms MAX.
- 1-2. INSULATION RESISTANCE: 1,000 Megohms MIN.
- 1-3. DIELECTRIC WITHSTANDING VOLTAGE: 500V AC FOR 1 MINUTE.


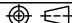
##### 2. MECHANICAL CHARACTERISTICS

- 2-1. RETENTION FORCE: MIN.100gf/PIN
- 2-2. DURABILITY: 5,000 CYCLES

##### 3. RoHS 2002/95/EC COMPLIANT.



RECOMMENDED PCB LAYOUT  
GENERAL TOLERANCE ±0.05

C	SHELL	1	STAINLESS STEEL 0.15t	Gold plated on Solder tail All over Nickel Plated .	
B	CONTACT	16	COPPER ALLOY 0.15t	Gold plated on contact area Tin plated on Solder tail All over Nickel Plated .	
A	HOUSING	1	HIGH-TEMPERATURE PLASTIC UL94-V0	BLACK	
NO	DESCRIPTION	QTY	MATERIAL	PLATING & COLOR	
UNLESS OTHERWISE SPECIFIED TOLERANCES					
DECIMALS:		TITLE: SIM CARD 16P 3.0H SMT DOUBLE TYPE			
X :±0.5		PART NO. 1051601AR002			
X.X :±0.3		DWN JAMES 2011.03.22			
X.XX :±0.2		CHKD			
		APVD			
		SCALE 1:1 UNIT: mm			
					
CUSTOMER COPY			SIZE: A4	SHEET: 10F1	REV: A