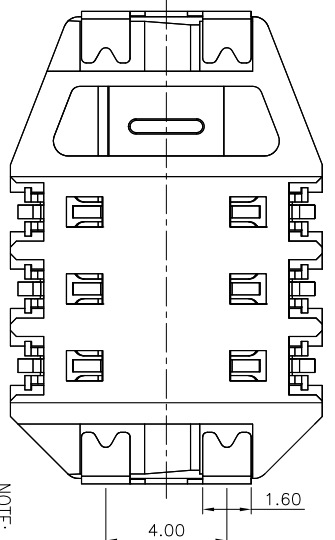
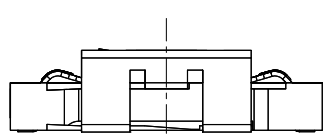
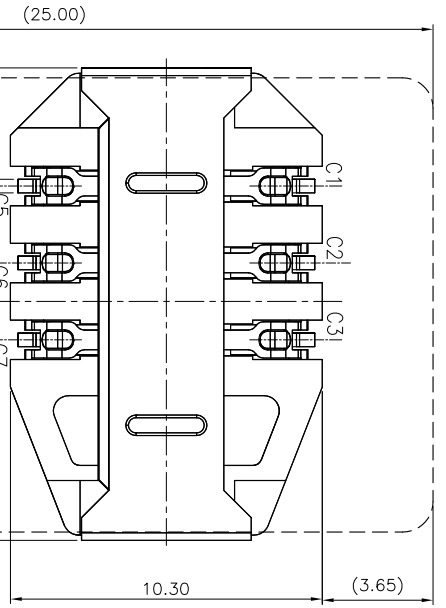


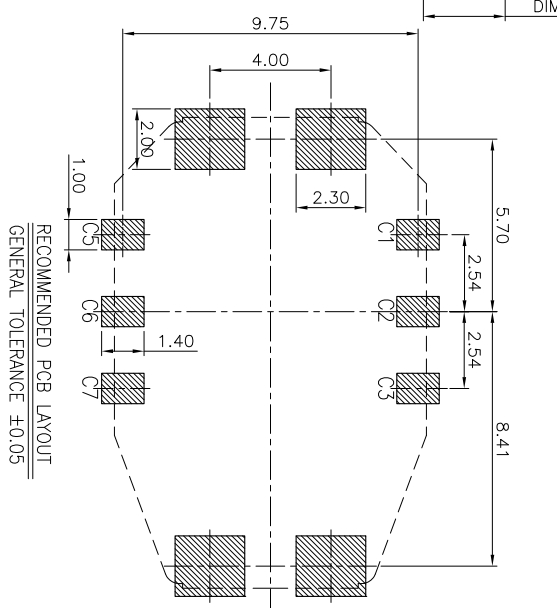
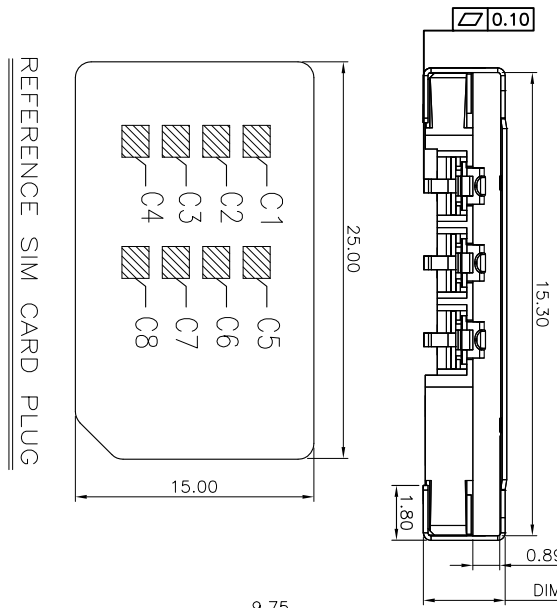
THIS INFORMATION IS CONFIDENTIAL AND IS DISCLOSED TO YOU ON CONDITION THAT NO FURTHER DISCLOSURE IS MADE BY YOU TO OTHER THAN TETULL PERSONNEL WITHOUT WRITTEN AUTHORIZATION FROM TETULL LTD.



SIM pin Assignment	
PIN#	Name
C1	VCC
C2	RST
C3	CLK
C4	N/A
C5	GND
C6	VPP
C7	I/O
C8	N/A

3.10H	3.10	1050604DR020
2.90H	2.90	1050604DR019
2.70H	2.70	1050604DR018
2.40H	2.40	1050604DR017
2.10H	2.10	1050604DR016
TYPE	DIM A	P/N

- NOTE:
- ELECTRICAL CHARACTERISTICS
    - VOLTAGE RATING: 15V DC.
    - CURRENT RATING: 1.0 A.
    - CONTACT RESISTANCE: 50 milliohms MAX.
    - INSULATION RESISTANCE: 1000 Megohms MIN.
    - DIELECTRIC WITHSTANDING VOLTAGE: 500V AC FOR 1 MINUTE.
  - MECHANICAL CHARACTERISTICS
    - RETENTION FORCE: 100gf MIN./PIN.
    - DURABILITY: 5000 CYCLES.
    - SALT SPRAY: 24H.
    - OPERATING TEMPERATURE: -40°C~85°C.
    - RoHS 2002/95/EC COMPLIANT.
    - MPQ : 1250PCS/REEL.



C	SHELL	1	STAINLESS STEEL 0.15t	Ni PLATING
B	CONTACT	6	COPPER ALLOY 0.15t	Gold plated on contact area Gold plated on Solder tail All over Nickel plated
A	HOUSING	1	HIGH-TEMPERATURE PLASTIC U94-N0	BLACK
NO	DESCRIPTION	QTY	MATERIAL	PLATING & COLOR

UNLESS OTHERWISE SPECIFIED TOLERANCES

DECIMALS: ANGLES:

X :±0.5 X :±2°

X.X :±0.3 X.X :±1'

X.XX :±0.2



TITLE: SIM CARD 6P(DIAMOND) 连接器			
PART NO.	DWM	JAMES	2020.01.07
CHKD	APVD		
SCALE 1:1	UNIT: mm		
SIZE: A4	SHEET: 10F1	REV: A	