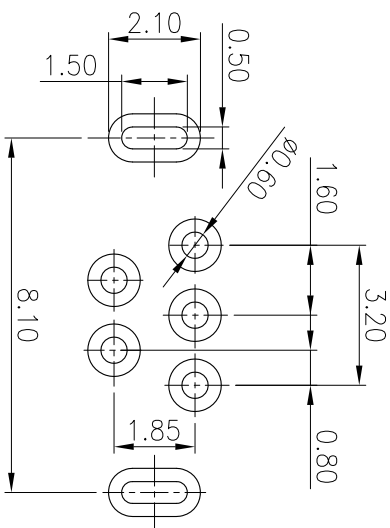
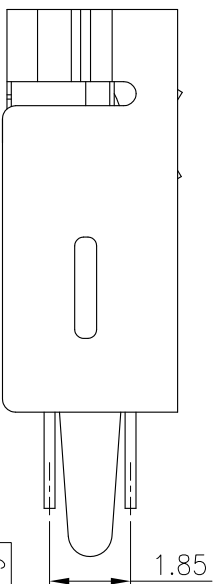
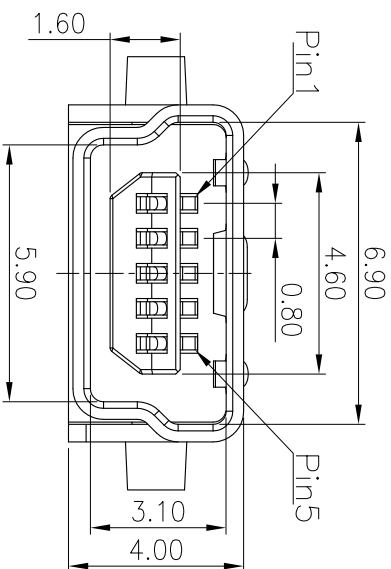
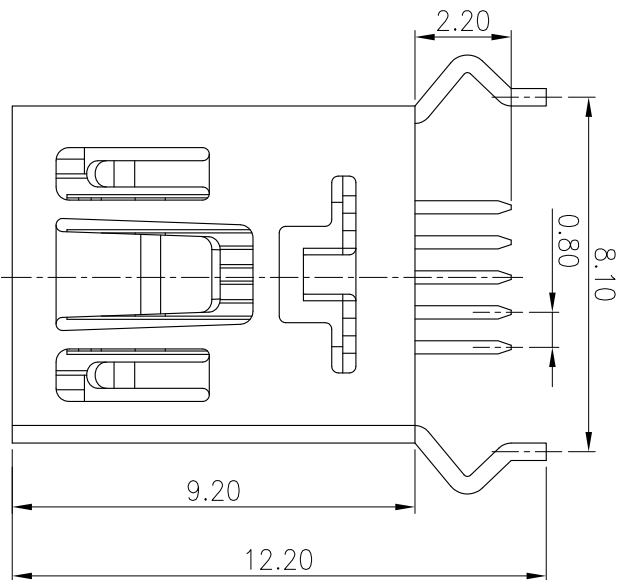


ROHS Compliant

THIS INFORMATION IS CONFIDENTIAL AND IS DISCLOSED TO YOU ON CONDITION THAT NO FURTHER DISCLOSURE IS MADE BY YOU TO OTHER THAN TETULL PERSONNEL WITHOUT WRITTEN AUTHORIZATION FROM TETULL LTD.



RECOMMENDED P.C.B. LAYOUT
TOLERANCE UNSPECIFIED $\pm 0.05\text{mm}$

- SPECIFICATIONS:
1. ELECTRICAL CHARACTERISTICS
 - 1-1. VOLTAGE RATING: 30V AC
 - 1-2. CURRENT RATING: 10A
 - 1-3. CONTACT RESISTANCE: 50 milliohms MAX.
 - 1-4. INSULATION RESISTANCE: 100 Megohms MIN.
 - 1-5. DIELECTRIC WITHSTANDING VOLTAGE: 500V AC FOR 1 MINUTE.
 2. MECHANICAL CHARACTERISTICS
 - 2-1. RETENTION FORCE: MIN. 300gf / PIN
 3. OPERATING TEMPERATURE: $-55^{\circ}\text{C} \sim 85^{\circ}\text{C}$
 4. RoHS 2002/95/EC COMPLIANT.

REV.	ECN NO.	OR DESCRIPTION	REVISED	DATE
A	PRODUCT RELEASE		ARES	2015.09.25

C	SHIELD	1	COPPER ALLOY 0.30T	Ni&Tin PLATED
B	TERMINAL	5	COPPER ALLOY 0.25T	Gold Flash On Contact Area Tin plated on Solder tail All over Nickel Plated.
A	HOUSING	1	THERMOPLASTIC UL94-V0	BLACK
NO	DESCRIPTION	QTY	MATERIAL	PLATING & COLOR
UNLESS OTHERWISE SPECIFIED TOLERANCES				
DECIMALS:		ANGLES:		
X	± 0.5	X	$\pm 2^{\circ}$	
X.X	± 0.3	X.X	$\pm 1^{\circ}$	
X.XX	± 0.2			



CUSTOMER COPY	SIZE: A4	SHEET: 10F1	REV: A
---------------	----------	-------------	--------

A

B

C

D

E

F