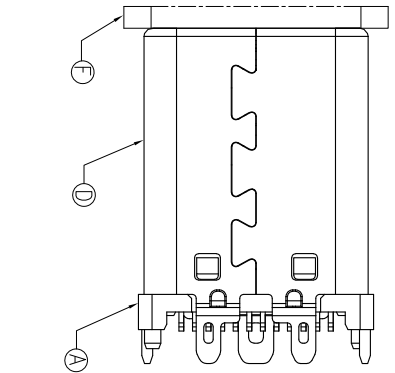
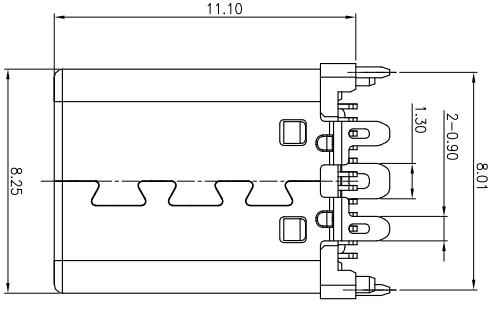
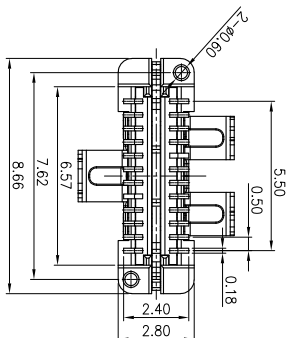
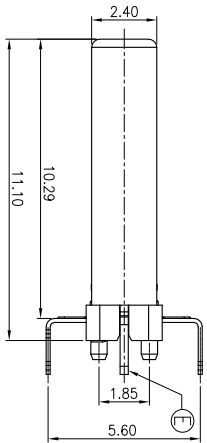
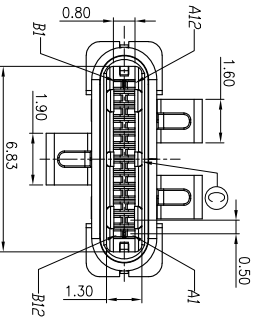


THIS INFORMATION IS CONFIDENTIAL AND IS DISCLOSED TO YOU ON CONDITION THAT NO FURTHER DISCLOSURE IS MADE BY YOU TO OTHER THAN TETULL PERSONNEL WITHOUT WRITTEN AUTHORIZATION FROM TETULL LTD.

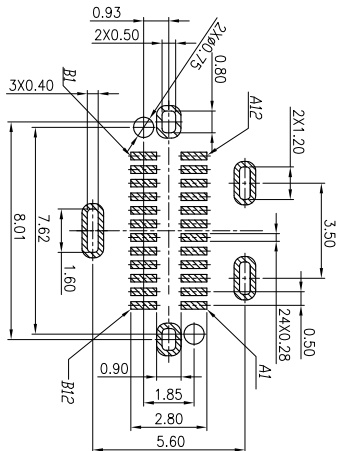
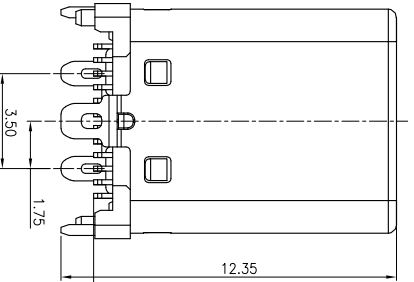


PIN	SIGNAL NAME	PIN	SIGNAL NAME
A1	GND	B12	GND
A2	SSTXP1	B11	SSRXP1
A3	SSTXN1	B10	SSRXN1
A4	VBUS	B9	VBUS
A5	CCI	B8	SPU2
A6	DP1	B7	DN2
A7	DN1	B6	DP2
A8	SBU1	B5	CC2
A9	VBUS	B4	VBUS
A10	SSRXN2	B3	SSTXN2
A11	SSRXP2	B2	SSTXP2
A12	GND	B1	GND

REV/ECN	NO OR DESCRIPTION	REVISED	DATE
A	PRODUCT RELEASE	JAMES	2016.01.22
B	MODIFY	BROKEN	2020.07.11



- NOTE:
- ELECTRICAL CHARACTERISTICS
 - MECHANICAL CHARACTERISTICS
 - OPERATING TEMPERATURE: -40°C~85°C
 - RoHS 2002/95/EC COMPLIANT.
 - MPQ : 300PCS/REEL.



RECOMMENDED PCB LAYOUT(t=0.80±0.05)
COMPONENT SIDE(GENERAL TOLERANCE:±0.05)

NO	DESCRIPTION	QTY	MATERIAL	PLATING & COLOR
F	CAP	1	THERMOPLASTIC UL94-V0	BLACK
E	LATCH	1	STAINLESS STEEL 0.30t	NI PLATING
D	SHELL	1	STAINLESS STEEL 0.15t	NI PLATING
C	SPRING	2	STAINLESS STEEL 0.12t	
B	CONTACT	24	COPPER ALLOY 0.15t	Gold Flash On Contact Area Tin plated on Solder tail All over Nickel Plated.
A	HOUSING	1	THERMOPLASTIC UL94-V0	BLACK

UNLESS OTHERWISE SPECIFIED TOLERANCES
DECIMALS: ANGLES:
X : ±0.5 X : ±2°
XX : ±0.3 XX : ±1°
XXX : ±0.2

TITLE: USB TYPE C 24P PLUG DIP TYPE

PART NO. 10224068004

CHKD BROKEN 2020.07.11

APVD

SCALE 1:1 UNIT: mm

CUSTOMER COPY SIZE: A4 SHEET: 10F2 REV: B