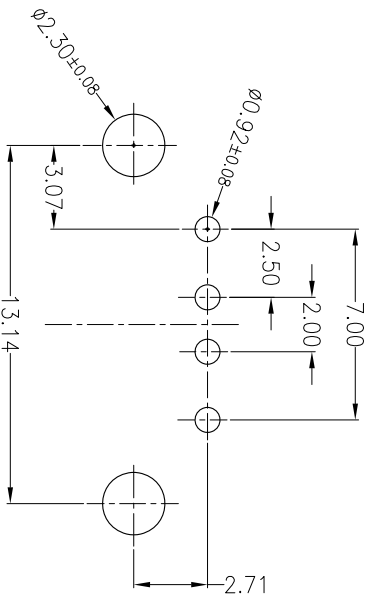
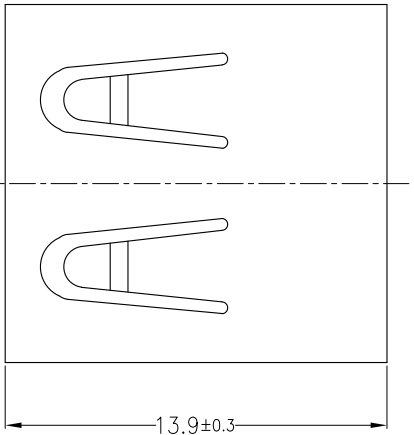
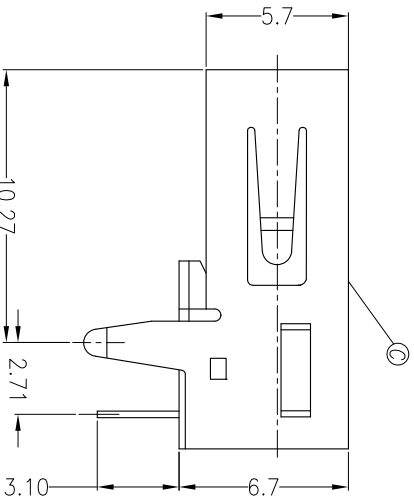
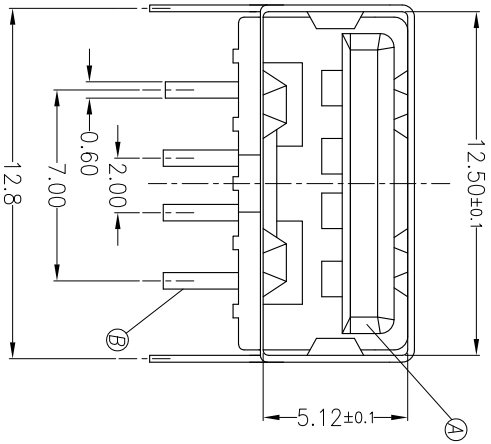


THIS INFORMATION IS CONFIDENTIAL AND IS DISCLOSED TO YOU ON CONDITION THAT NO FURTHER DISCLOSURE IS MADE BY YOU TO OTHER THAN TETULL PERSONNEL WITHOUT WRITTEN AUTHORIZATION FROM TETULL LTD.



RECOMMENDED P.C.B. LAYOUT  
TOP VIEW (TOLERANCE: ±0.05)



REV.	ECN NO OR DESCRIPTION	REVISED	DATE
A	PRODUCT RELEASE	ARES	2012.11.29

- NOTE:
- ELECTRICAL CHARACTERISTICS
    - 1-1. VOLTAGE RATING: 30V MAX
    - 1-2. CURRENT RATING: 2.0A MAX
    - 1-3. CONTACT RESISTANCE: 30 milliohms MAX.
    - 1-4. INSULATION RESISTANCE: 1000 Megohms MIN.
    - 1-5. DIELECTRIC WITHSTANDING VOLTAGE: 500V AC FOR 1 MINUTE.
  - MECHANICAL CHARACTERISTICS
    - 2-1. MATING FORCE: 35N MAX
    - 2-2. UNMATING FORCE: 10N MIN
    - 2-3. DURABILITY: 5000 CYCLES
    - 3. SALT SPRAY: 24H
    - 4. OPERATING TEMPERATURE: -40°C~85°C
    - 5. ROHS 2002/95/EC COMPLIANT.
    - 6. MPQ : 100PCS/TRAY.

TABLE:

TABLE:	DESCRIPTION	VALUE	PART NO.
COPPER ALLOY	WHITE	1020401AT110	
SPCC	BLACK	1020401AT009	
SPCC	WHITE	1020401AT010	
SHELL	COLOR	P/N	

NO	DESCRIPTION	QTY	MATERIAL	PLATING & COLOR
C	SHIELD	1	SEE TABLE 0.25t	NI PLATING
B	TERMINAL	4	COPPER ALLOY 0.25t	Cold Flash On Contact Area Tin plated on Solder tail All over Nickel Plated
A	HOUSING	1	THERMOPLASTIC U94-40	SEE TABLE
NO	DESCRIPTION	QTY	MATERIAL	PLATING & COLOR

UNLESS OTHERWISE SPECIFIED TOLERANCES

DECIMALS: ANGLES:  
 X : ±0.5 X : ±2  
 X.X : ±0.3 X.X : ±1  
 X.XX : ±0.2



CUSTOMER COPY

TITLE:	SCALE	UNIT	REV.
USB A/F 4P 90° DIP w/Flange TYP	1:1	mm	A
PART NO.	SIZE:	SHEET:	
DWN	A4	10F1	
CHKD			
APVD			